



## 900 MHz Yagi Antennas

**Frequency:824-960MHz, gain:14dBi 10dBi 8dBi 6dBi**, It is designed primarily for directional applications, Point to multipoint systems . The wide band antenna ideally suited for 800MHz Cellular band. 900MHz ISM Band & GSM Wireless LAN systems ,Point to multipoint & Non Line of Sight(NLOS) applications RFID ,SCADA ,Wireless Video Links

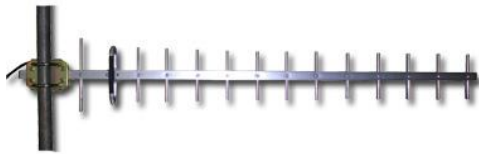
The Yagi directional Series antenna system offered by ZDA is constructed of 6061-T6 Aluminum for outstanding service life. Individual elements are braised to the main boom for permanent attachment. These antennas have high gain and good front to back performance to minimize external interference. They can be mounted in vertical or horizontal polarization.provides the user with anodized aluminum boom, solid elements,Heavy duty mounting hardwareWaterproof Design all-weather operation. these Yagi directional antenna features from ZDA are offered at cost-effective price.

### Features:

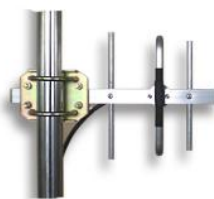
- all weather Anodized Aluminum construction
- Can be installed for either vertical or horizontal polarization
- Solid Aluminum elements
- Heavy duty mounting hardware

### Applications :

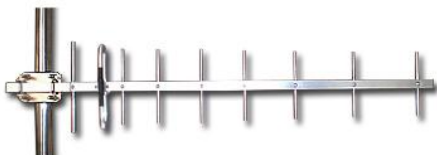
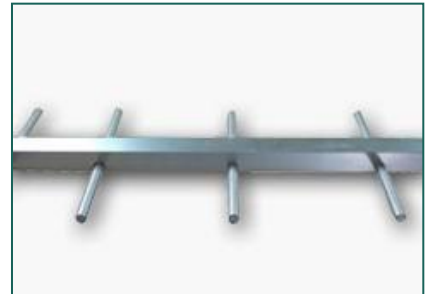
- 800MHz Cellular
- 900MHz ISM Band & GSM Wireless LAN systems
- Point to multipoint & Non Line of Sight(NLOS) applications
- RFID & SCADA
- Wireless Video Links



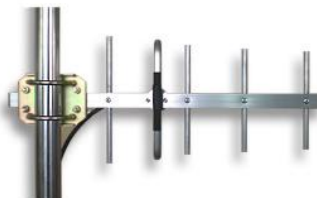
ZDADJ900-14YG



ZDADJ900-6YG



ZDADJ900-10YG



ZDADJ900-8YG

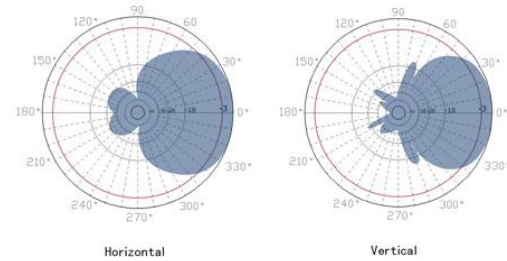




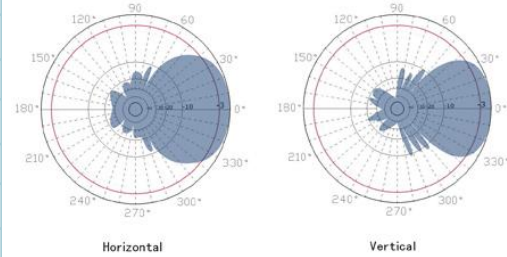
**900MHz yagi Antennas**

**824-960MHz Yagi antenna series specifications**

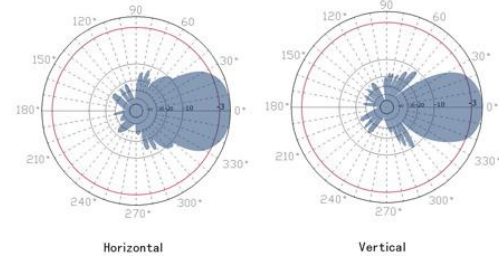
| Model                         | ZDADJ900-6YG                  | ZDADJ900-8YG                  | ZDADJ900-12YG                 | ZDADJ900-14YG                 |
|-------------------------------|-------------------------------|-------------------------------|-------------------------------|-------------------------------|
| Frequency Range               | 824-960MHz                    | 824-960 MHz                   | 824-960 MHz                   | 824-960 MHz                   |
| Gain                          | 6dBi                          | 9dBi                          | 12dBi                         | 14dBi                         |
| Polarization                  | Vertical or Horizontal        | Vertical or Horizontal        | Vertical or Horizontal        | Vertical or Horizontal        |
| Horizontal Beam Width         | 90 °                          | 78 °                          | 52 °                          | 48 °                          |
| Vertical Beam Width           | 82 °                          | 68 °                          | 45 °                          | 38 °                          |
| VSWR                          | <1.5                          | <1.5                          | <1.5                          | <1.5                          |
| Front to back ratio           | >13dB                         | >13dB                         | >15dB                         | >15dB                         |
| Input Impedance               | 50 ohm                        | 50 ohm                        | 50 ohm                        | 50 ohm                        |
| Input Maximum Power           | 100 W                         | 100 W                         | 100 W                         | 100 W                         |
| Lightning Protection          | DC Ground                     | DC Ground                     | DC Ground                     | DC Ground                     |
| Connector                     | N female or customized        | N female or customized        | N female or customized        | N female or customized        |
| Size                          | 400mm                         | 550mm                         | 800mm                         | 1180mm                        |
| Antenna Material              | Alu alloy                     | Alu alloy                     | Alu alloy                     | Alu alloy                     |
| Antenna Structure             | 3 units                       | 5 units                       | 9 units                       | 14 units                      |
| Operating Temperature         | -40to 85° C<br>(-40to 185° F) | -40to 85° C<br>(-40to 185° F) | -40to 85° C<br>(-40to 185° F) | -40to 85° C<br>(-40to 185° F) |
| Diameter of Installation Pole | 1.2-2.3in. (30-55mm)          | 1.2-2.3in. (30-55mm)          | 1.2-2.3in. (30-55mm)          | 1.2-2.3in. (30-55mm)          |
| Weight                        | 1.21 lbs. (0.55kg)            | 1.43 lbs. (0.65kg)            | 1.8 lbs. (0.78kg)             | 1.98 lbs. (0.9kg)             |
| Wind Loading:<br>100MPH       | 4lb.                          | 6lb.                          | 10lb.                         | 13lb.                         |
| 120MPH                        | 7lb.                          | 9lb.                          | 18lb.                         | 21lb.                         |



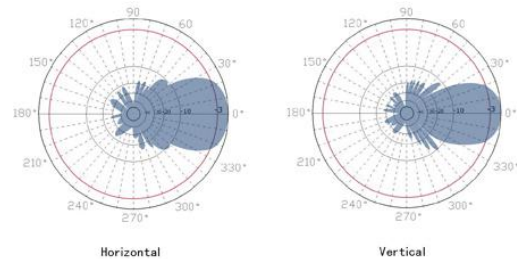
**ZDADJ900-6YG Patterns**



**ZDADJ900-9YG Patterns**



**ZDADJ900-12YG Patterns**



**ZDADJ900-14YG Patterns**