



## 800MHz Yagi Antennas

**Frequency:806-896MHz, gain:13dBi 10dBi 8dBi 6dBi**, It is designed primarily for directional applications, point to point systems . It is ideally suited for 800MHz Cellular band.

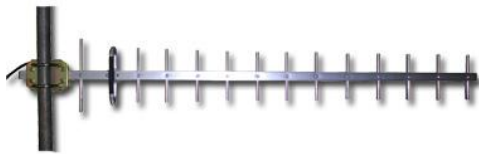
The Yagi directional Series antenna system offered by ZDA is constructed of 6061-T6 Aluminum for outstanding service life. Individual elements are braised to the main boom for permanent attachment. These antennas have high gain and good front to back performance to minimize external interference. They can be mounted in vertical or horizontal polarization.provides the user with anodized aluminum boom, solid elements,Heavy duty mounting hardwareWaterproof Design all-weather operation. these Yagi directional antenna features from ZDA are offered at cost-effective price.

### Features:

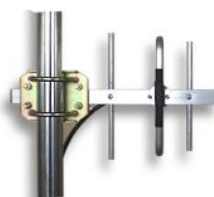
- all weather Anodized Aluminum construction
- Can be installed for either vertical or horizontal polarization
- Solid Aluminum elements
- Heavy duty mounting hardware

### Applications :

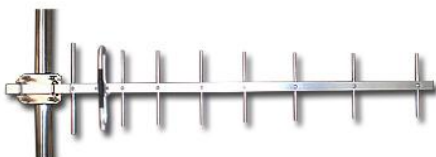
- 800MHz Cellular
- Point to multipoint applications



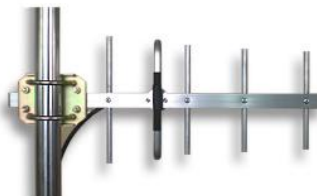
ZDADJ800-13YG



ZDADJ800-6YG



ZDADJ800-10YG



ZDADJ800-8YG

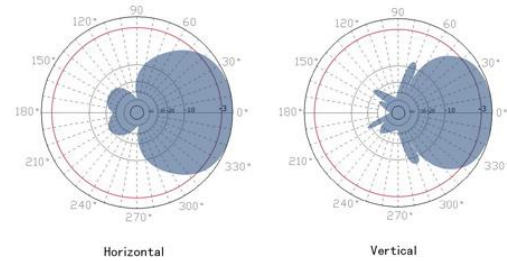




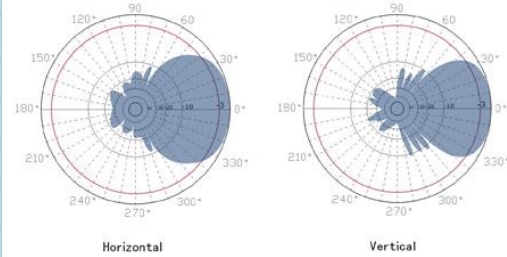
**800MHz yagi Antennas**

**806-896MHz Yagi antenna series specifications**

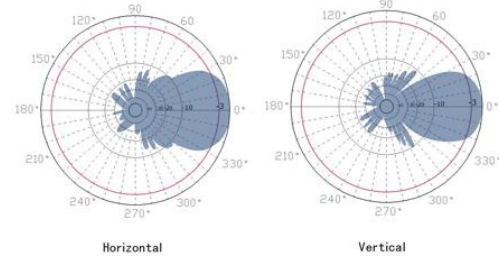
Model	ZDADJ800-6YG	ZDADJ800-8YG	ZDADJ800-10YG	ZDADJ800-13YG
Frequency Range	806-896 MHz	806-896 MHz	806-896 MHz	806-896 MHz
Gain	6dBi	8dBi	10dBi	13dBi
Polarization	Vertical or Horizontal	Vertical or Horizontal	Vertical or Horizontal	Vertical or Horizontal
Horizontal Beam Width	90 °	78 °	52 °	48 °
Vertical Beam Width	82 °	68 °	45 °	38 °
VSWR	<1.5	<1.5	<1.5	<1.5
Front to back ratio	>13dB	>13dB	>15dB	>15dB
Input Impedance	50 ohm	50 ohm	50 ohm	50 ohm
Input Maximum Power	100 W	100 W	100 W	100 W
Lightning Protection	DC Ground	DC Ground	DC Ground	DC Ground
Connector	N female or customized	N female or customized	N female or customized	N female or customized
Size	11.8 inches(0.3m)	19.7 inches(0.5 m)	31inches(0. 8m)	45.7inches( 1.16m)
Antenna Material	Alu alloy	Alu alloy	Alu alloy	Alu alloy
Antenna Structure	3 units	5 units	9 units	14 units
Operating Temperature	-40to 85 ° C (-40to 185 ° F)	-40to 85 ° C (-40to 185 ° F)	-40to 85 ° C (-40to 185 ° F)	-40to 85 ° C (-40to 185 ° F)
Diameter of Installation Pole	1.2-2.3in. (30-55mm)	1.2-2.3in. (30-55mm)	1.2-2.3in. (30-55mm)	1.2-2.3in. (30-55mm)
Weight	1.21 lbs. (0.55kg)	1.43 lbs. (0.65kg)	1.8 lbs. (0.78kg)	1.98 lbs. (0.9kg)
Wind Loading: 100MPH	4lb.	6lb.	10lb.	13lb.
120MPH	7lb.	9lb.	18lb.	21lb.



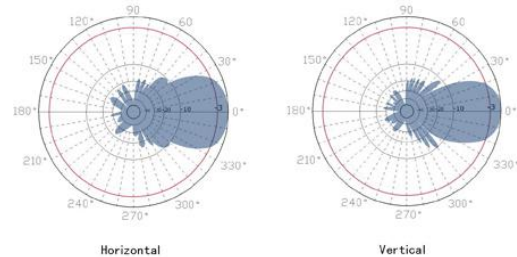
**ZDADJ800-6YG Patterns**



**ZDADJ800-8YG Patterns**



**ZDADJ800-10YG Patterns**



**ZDADJ800-13YG Patterns**