



750 MHz Yagi Antennas

Frequency:746-806MHz, gain:16dBi 14dBi 10dBi, It is designed primarily for directional applications,Point to Multipoint applications . It is ideally suited for 700MHz WIMAX Upper Band and public safety Band .

The Yagi directional Series antenna system offered by ZDA is constructed of 6061-T6 Aluminum for outstanding service life. Individual elements are braised to the main boom for permanent attachment.

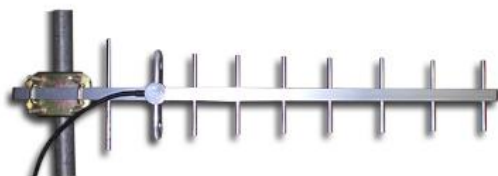
These antennas have high gain and good front to back performance to minimize external interference. They can be mounted in vertical or horizontal polarization . provides the user with anodized aluminum boom, solid elements , Heavy duty mounting hardware Waterproof Design all-weather operation. these Yagi directional antenna features from ZDA are offered at cost-effective price.

Features:

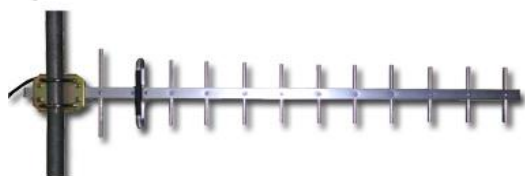
- all weather Anodized Aluminum construction
- Can be installed for either vertical or horizontal polarization
- Solid Aluminum elements
- Heavy duty mounting hardware

Applications :

- 750MHz WIMAX Upper Band
- Point to Multipoint applications
- 700MHz public safety applications



ZDADJ750-14YG



ZDADJ750-16YG



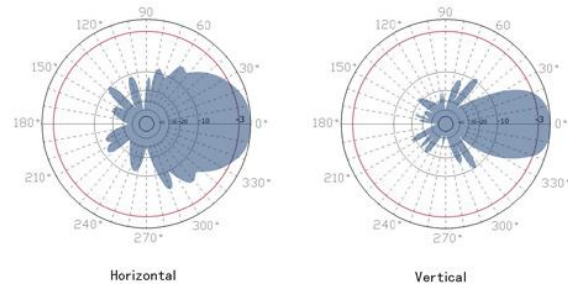
ZDADJ750-10YG



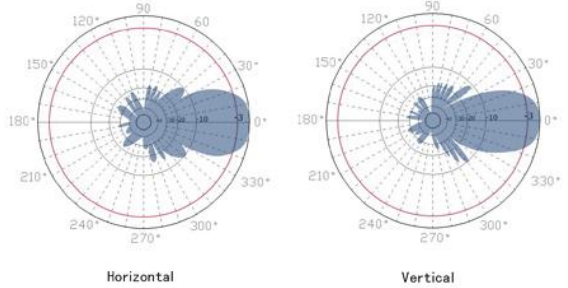
750 MHz yagi Antennas

746-806MHz Yagi antenna series specifications

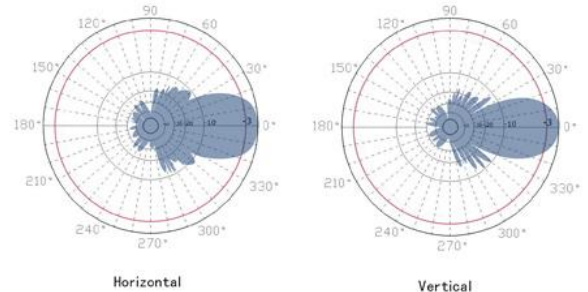
Model	ZDADJ750-10YG	ZDADJ750-14YG	ZDADJ750-16YG
Frequency Range	746-806 MHz	746-806 MHz	746-806 MHz
Gain	10dBi	14dBi	16dBi
Polarization	Vertical or Horizontal	Vertical or Horizontal	Vertical or Horizontal
Horizontal Beam Width	50 °	42 °	34 °
Vertical Beam Width	40 °	35 °	28 °
VSWR	<1.5	<1.5	<1.5
Front to back ratio	>15dB	>15dB	>15dB
Input Impedance	50 ohm	50 ohm	50 ohm
Input Maximum Power	100 W	100 W	100 W
Lightning Protection	DC Ground	DC Ground	DC Ground
Connector	N female or customized	N female or customized	N female or customized
Size	460mm	1200mm	1760mm
Antenna Material	Alu alloy	Alu alloy	Alu alloy
Antenna Structure	5 units	10 units	14 units , Two piece design
Operating Temperature	-40to 85° C (-40to 185° F)	-40to 85° C (-40to 185° F)	-40to 85° C (-40to 185° F)
Diameter of Installation Pole	1.2-2.3in. (30-55mm)	1.2-2.3in. (30-55mm)	1.2-2.3in. (30-55mm)
Weight	1.5 lbs. (0.68kg)	2.2 lbs. (1kg)	2.64 lbs. (1.2kg)
Wind Loading: 100MPH	5lb.	11lb.	13lb.
120MPH	8lb.	16lb.	21lb.



ZDADJ750-10YG Patterns



ZDADJ750-14YG Patterns



ZDADJ750-16YG Patterns