



406-430MHz Yagi Antennas

Frequency:406-430MHz, gain: 13dBi 11dBi 9 dBi 7dBi, It is designed primarily for 406–430 MHz SCADA,UHF business band, General Mobile Radio Service, and Family Radio Service 2-way "walkie-talkies", public safety band

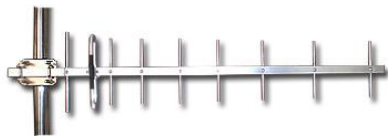
The Yagi directional Series antenna system offered by ZDA is constructed of 6061-T6 Aluminum for outstanding service life. Individual elements are braised to the main beam for permanent attachment. These antennas have high gain and good front to back performance to minimize external interference. They can be mounted in vertical or horizontal polarization. provides the user with anodized aluminum boom, solid elements,Heavy duty mounting Design all-weather operation. these Yagi directional antenna features from Antennector are offered at cost-effective price.

Features:

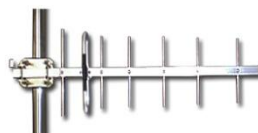
- all weather Anodized Aluminum construction
- Can be installed for either vertical or horizontal polarization
- Solid Aluminum elements
- Heavy duty mounting hardware

Applications :

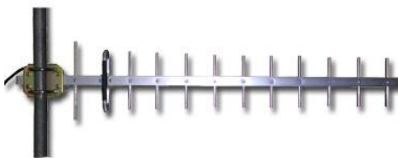
- 406-430 MHz Band
- SCADA
- UHF business band



ZDADJ400-11YG



ZDADJ400-9YG



ZDADJ400-13YG

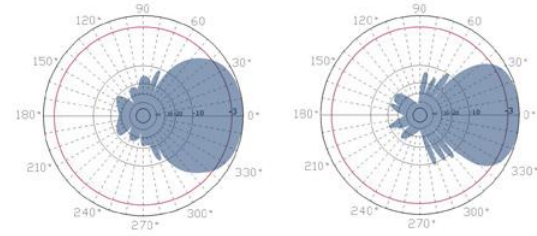


ZDADJ400-7YG

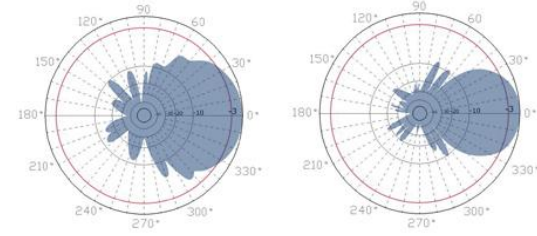


406-430MHz yagi Antennas

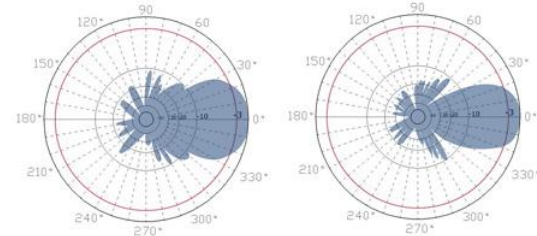
406-430MHz Yagi antenna series specifications				
Model	ZDADJ400-7YG	ZDADJ400-9YG	ZDADJ400-11YG	ZDADJ400-13YG
Frequency Range	406-430 MHz	406-430 MHz	406-430 MHz	406-430 MHz
Gain	7dBi	9dBi	11dBi	13dBi
Polarization	Vertical or Horizontal	Vertical or Horizontal	Vertical or Horizontal	Vertical or Horizontal
Horizontal Beam Width	80°	65°	45°	34°
Vertical Beam Width	76°	56°	38°	30°
VSWR	<1.5	<1.5	<1.5	<1.5
Front to back radio	>15dB	>15dB	>15dB	>15dB
Input Impedance	50 ohm	50 ohm	50 ohm	50 ohm
Input Maximum Power	200 W	200 W	200 W	200 W
Lightning Protection	DC Ground	DC Ground	DC Ground	DC Ground
Connector	N female or customized	N female or customized	N female or customized	N female or customized
Size	690mm	800mm	1150mm	1480mm
Antenna Material	Alu alloy	Alu alloy	Alu alloy	Alu alloy
Antenna Structure	5 units	7 units	9 units	12 units
Operating Temperature	-40to 85° C (-40to 185° F)	-40to 85° C (-40to 185° F)	-40to 85° C (-40to 185° F)	-40to 85° C (-40to 185° F)
Diameter of Installation Pole	1.2-2.3in. (30-55mm)	1.2-2.3in. (30-55mm)	1.2-2.3in. (30-55mm)	1.2-2.3in. (30-55mm)
Weight	1.32 lbs. (0.6 kg)	1.76 lbs. (0.8 kg)	2.2 lbs. (1 Kg)	3.3 lbs. (1.5kg)
Wind Loading: 100MPH	10lb.	15lb.	25lb.	58lb.



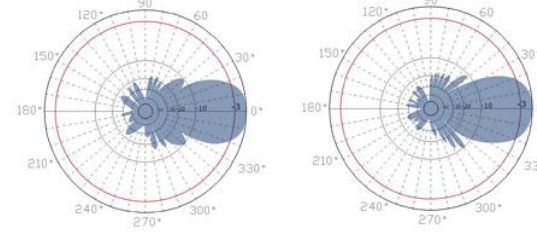
ZDADJ400-7YG Patterns



ZDADJ400-9YG Patterns



ZDADJ400-11YG Patterns



ZDADJ400-13YG Patterns