



1.8GHz Yagi Antennas

Frequency:1710-1880MHz, gain:17dBi 14dBi 12dBi 10dBi, It is designed primarily for directional applications, Point to multipoint systems . The wide band antenna ideally suited for directional applications, Point to Multipoint, 1710–1755 MHz: AWS mobile phone uplink (UL) Operating Band .

The Yagi directional Series antenna system offered by ZDA is constructed of 6061-T6 Aluminum for outstanding service life. Individual elements are braised to the main beam for permanent attachment. These antennas have high gain and good front to back performance to minimize external interference. They can be mounted in vertical or horizontal polarization.provides the user with anodized aluminum boom, solid elements,Heavy duty mounting ,Design all-weather operation. these Yagi directional antenna features from ZDA are offered at cost-effective price.

Features:

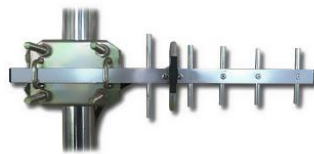
- all weather Anodized Aluminum construction
- Can be installed for either vertical or horizontal polarization
- Solid Aluminum elements
- Heavy duty mounting hardware

Applications :

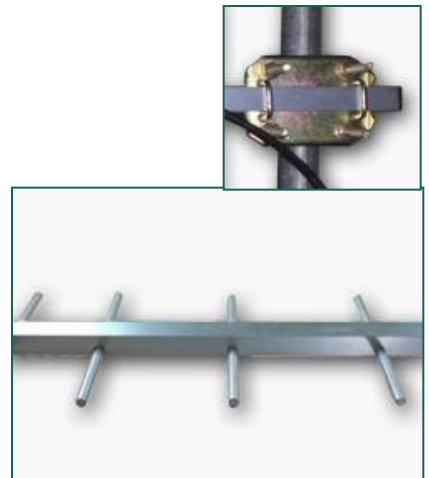
- 1.8 GHz band applications
- 1710–1755 MHz: AWS mobile phone uplink (UL) Operating Band
- Point to Point Systems & Point to Multi-point Systems



ZDADJ1800-17YG



ZDADJ1800-10YG



ZDADJ1800-14YG



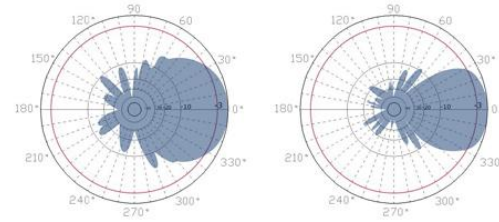
ZDADJ1800-12YG



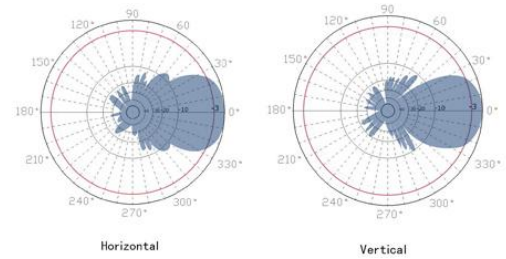


1.8GHz yagi Antennas

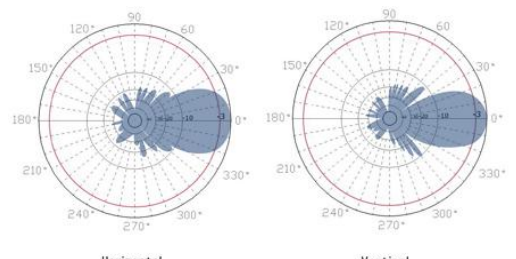
1710-1880MHz Yagi antenna series specifications				
Model	ZDADJ1800-10YG	ZDADJ1800-12YG	ZDADJ1800-14YG	ZDADJ1800-17YG
Frequency Range	1710-1880MHz	1710-1880MHz	1710-1880MHz	1710-1880MHz
Gain	10dBi	11dBi	14dBi	17dBi
Polarization	Vertical or Horizontal	Vertical or Horizontal	Vertical or Horizontal	Vertical or Horizontal
Horizontal Beam Width	65 °	55 °	40 °	35 °
Vertical Beam Width	58 °	48 °	32 °	28 °
VSWR	<1.5	<1.5	<1.5	<1.5
Front to back ratio	>13dB	>15dB	>15dB	>15dB
Input Impedance	50 ohm	50 ohm	50 ohm	50 ohm
Input Maximum Power	100 W	100 W	100 W	150 W
Lightning Protection	DC Ground	DC Ground	DC Ground	DC Ground
Connector	N female or customized	N female or customized	N female or customized	N female or customized
Size	14inches(0.33m)	21inches(0.535 m)	24 inches(0.62m)	40 inches(1 m)
Antenna Material	Alu alloy	Alu alloy	Alu alloy	Alu alloy
Antenna Structure	6 units	12 units	14 units	17 units
Operating Temperature	-40to 85 ° C (-40to 185 ° F)	-40to 85 ° C (-40to 185 ° F)	-40to 85 ° C (-40to 185 ° F)	-40to 85 ° C (-40to 185 ° F)
Diameter of Installation Pole	1.2-2.3in. (30-55mm)	1.2-2.3in. (30-55mm)	1.2-2.3in. (30-55mm)	1.2-2.3in. (30-55mm)
Weight	1.1 lbs. (0.5kg)	1.54lbs. (0.7kg)	1.76lbs. (0.8kg)	2.2lbs. (1kg)
Wind Loading: 100MPH	3.5lb.	6.6lb.	8.6lb.	15.2lb.
120MPH	7.2lb.	10.6lb.	15lb.	19.2lb.



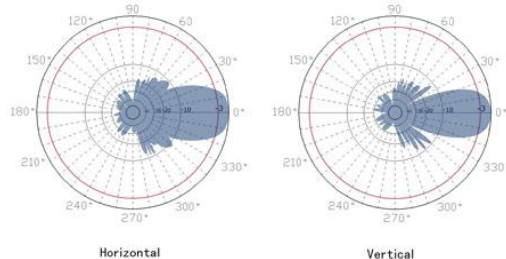
ZDADJ1800-10YG Patterns



ZDADJ1800-12YG Patterns



ZDADJ1800-14YG Patterns



ZDADJ1800-17YG Patterns